

PROJECT BY:



RERA Reg. No.: RAJ/P/2024/3206

MARKETED BY:



UTTAM'S
SHYAMASHISH
PARK
AT AJMER ROAD, JAIPUR

www.shyamashish.com



UTTAM'S
SHYAMASHISH
PARK

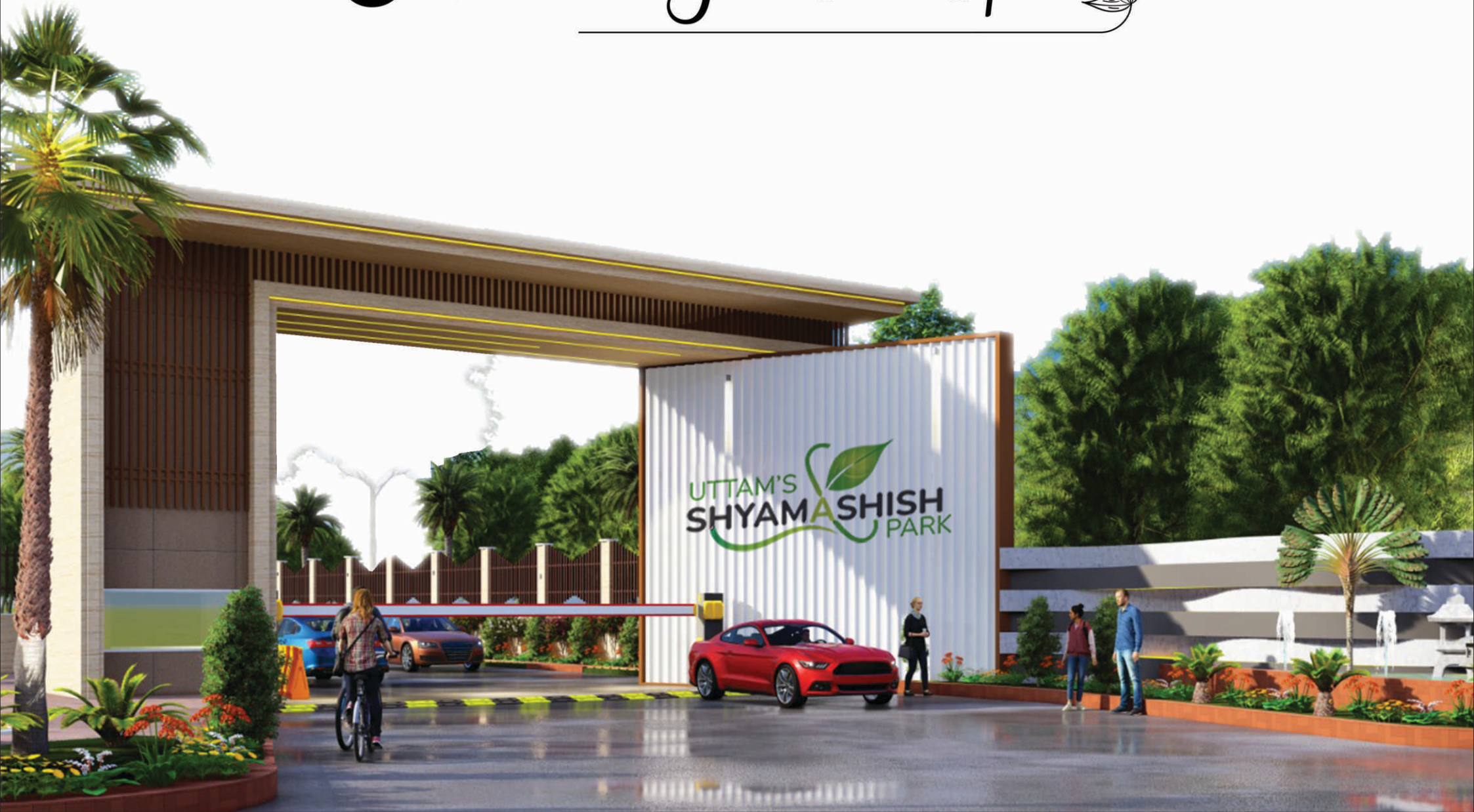
Discover The Joy of Living Close to Nature

Welcome to *Uttam's Shyamashish Park*, an exclusive plotting project situated along the serene Ajmer Road in Jaipur. This exceptional development combines the allure of nature with modern living, offering a tranquil and rejuvenating environment for your dream home.

Uttam's Shyamashish Park is meticulously designed to provide residents with an idyllic lifestyle amidst lush greenery and picturesque landscapes. Every plot within the park is crafted to blend seamlessly with the natural surroundings, ensuring a harmonious living experience.



EMBRACE THE SERENITY OF
Nature in Your Own Space






Covered by Boundary Wall With Wire Fencing 2Ft.

Wire Fencing



Overhead Water Tank

Ensure Reliable Water Supply



Communication

Optical Fiber Communication



Park

Landscape park & Herbal park



Air Quality

Air Quality Index Jaipur city 157, Uttam's Shyamashish Park 45



Gated Entry

Enter a Secure Community



Rain Water Harvesting

Conserve Natural Resources



Road And Pathways

Navigate Easily with Well Designed Paths




Club House

Dedicated Club House With Banquet Hall & Swimming Pool



Water

Underground Water line management



Electricity

Underground Electricity Lane



Sports Zone

Stay Active and Fit in Our State-of-the-Art



Environment

Safe and Healthy Environment



CCTV

Monitoring CCTV Camera's 24x7



Seating

Gazebo Seating

Amenities and Facilities

That add value to your life...



Security

24x7 Security



Rooms

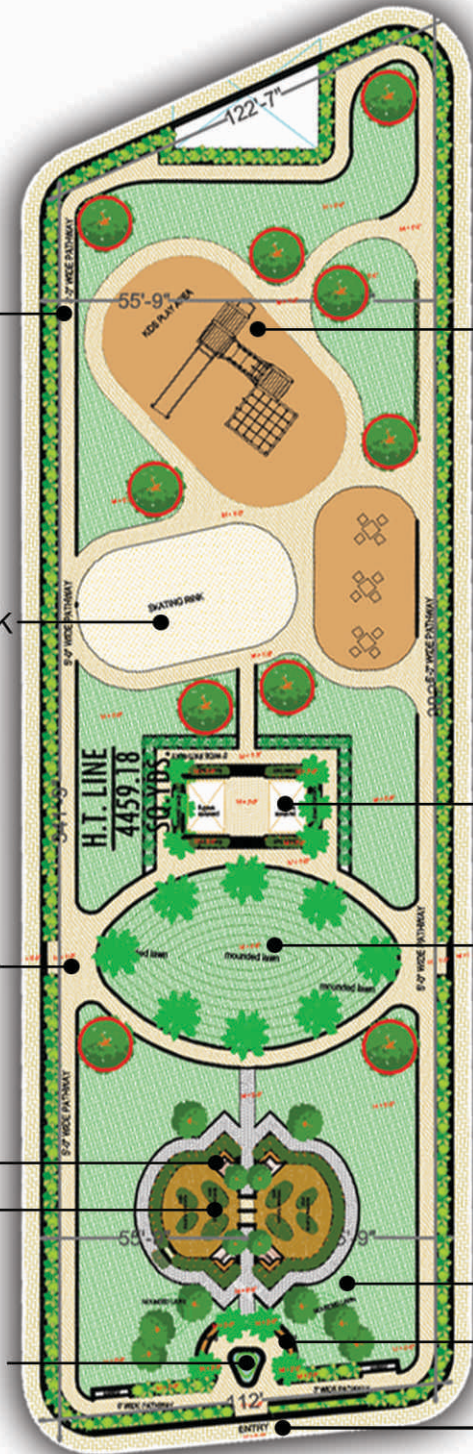
Adjoining 100 Rooms Resort



space

Retail space

Green space & AMENITIES



Pathway Kids Play Area

Skating Park

Peragola Seating

Pathway

Mounded Lawn

Seating
seasonal planters beds

Mounded Lawn

Seating

Fountain

Entry

“ DISCOVER AN IDYLIC HEAVEN WHERE YOU CAN REJUVENATE YOUR SENSES AND CONNECT WITH THE BEAUTY OF NATURE. ”



Entry

Park



View

Club House Amenities...



Reception Area



Banquet Hall



Swimming Pool



Gym



Dance Room



Games Hall



4 Guest Rooms



Changing Rooms
for Male-Female



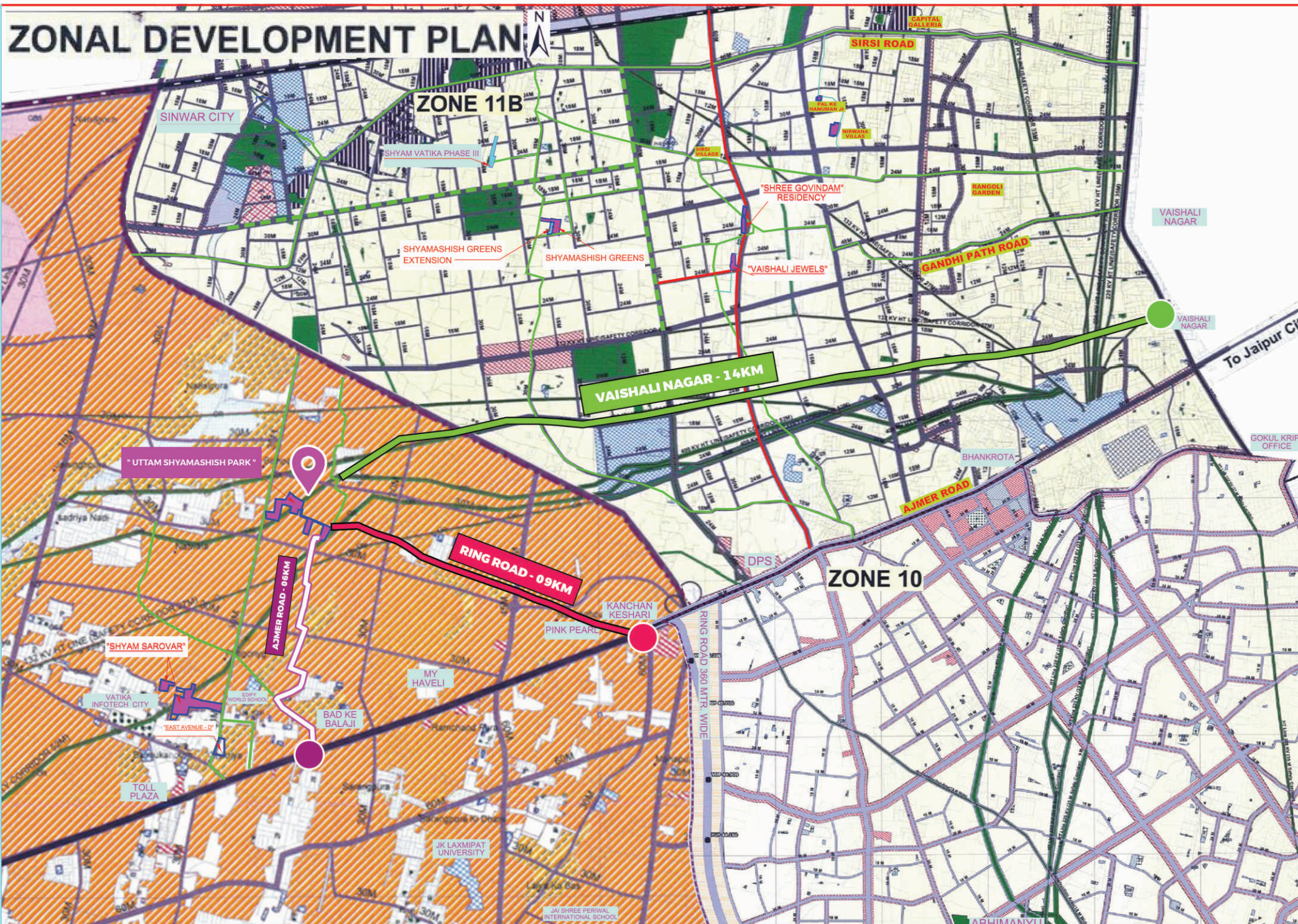
Nature



ZONAL DEVELOPMENT PLAN

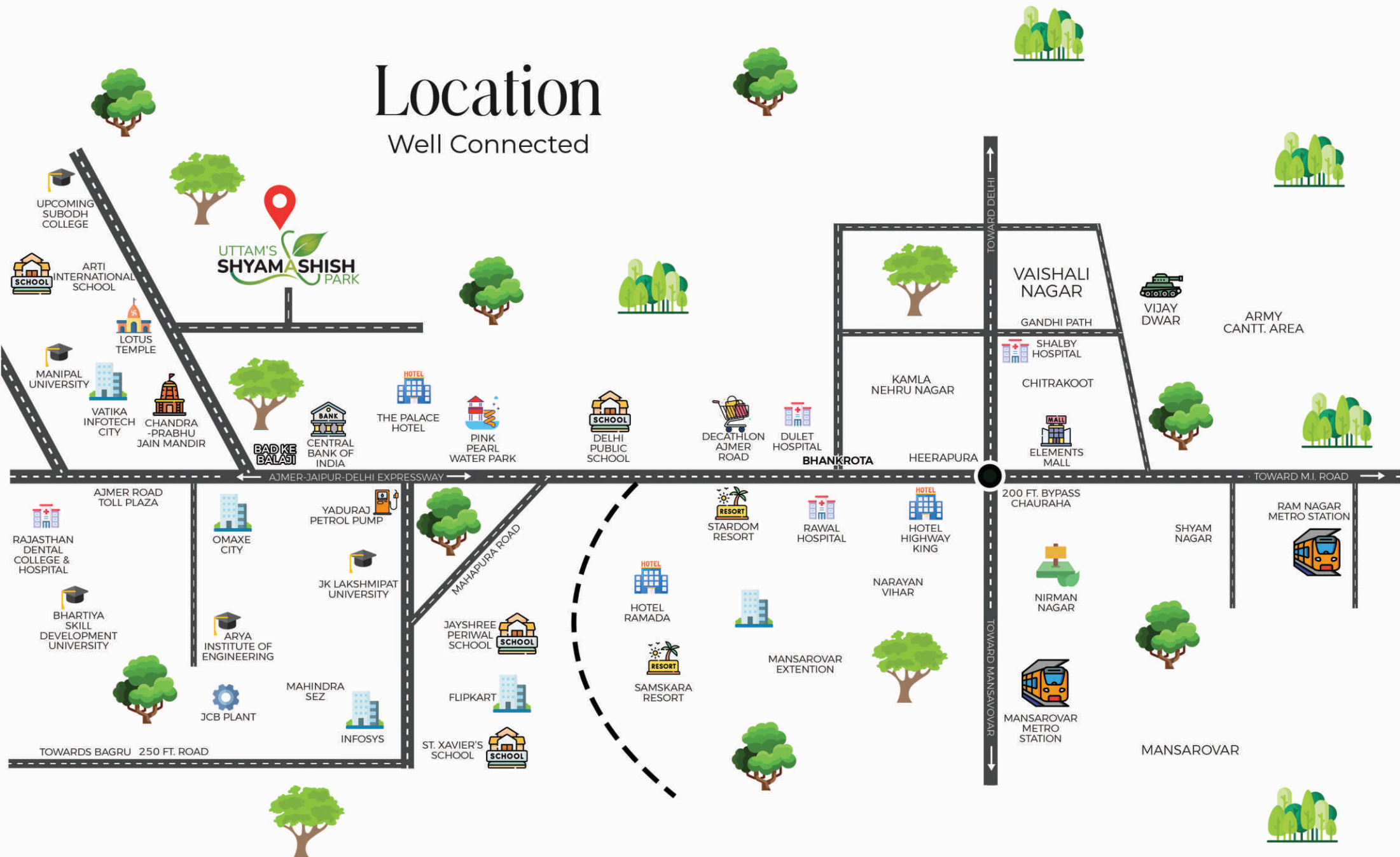
ZONE 11B

ZONE 10



Location

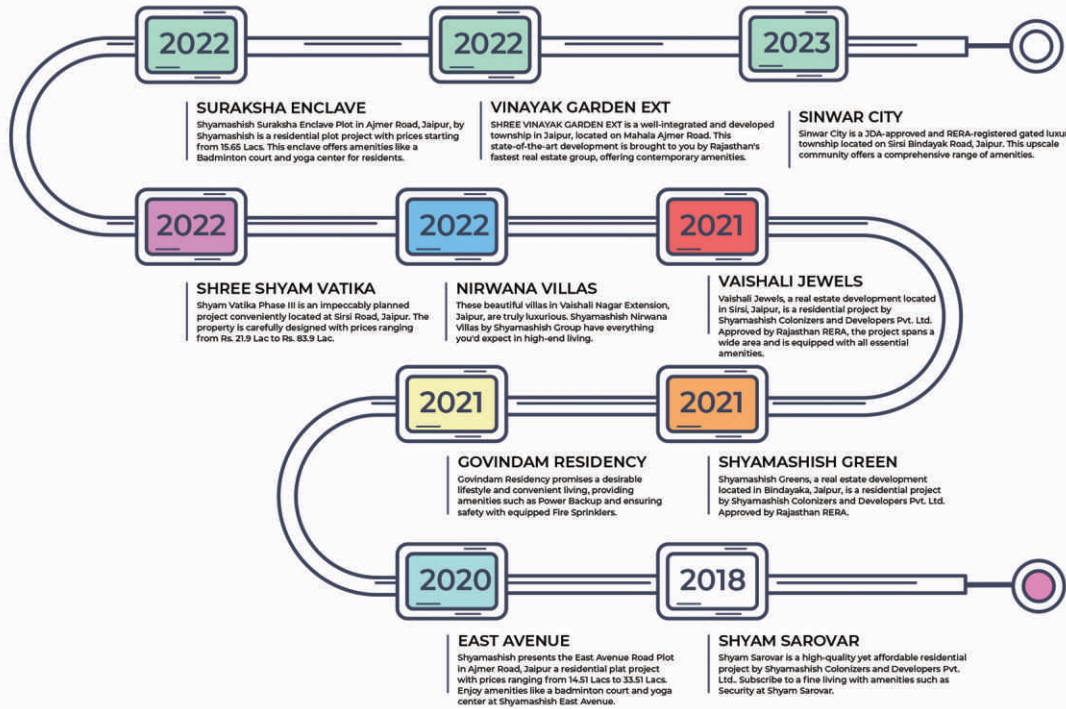
Well Connected



WELCOME TO AN ADDRESS THAT PLACES YOU AT THE CENTER OF EVERYTHING.

Our Legacy

Our Prestigious Projects



Elevating Lives Through Unmatched Excellence in Innovative Real Estate Solutions and Design.

Innovation, and a dedication to crafting Your dream home.



as they say "change is inevitable"

Unlock lucrative potential with our investment opportunity as contracts increase since 2018. Capitalize on a trajectory of growth and seize the advantages of this upward trend for promising returns.

Embarking on our journey in 2018, crafting bespoke residential heavens became our passion. We ardently believe in the alchemy of quality, affordability, and prime locations for enduring success. It's a simple yet enchanting formula that consistently works its magic, shaping our commitment to excellence in every endeavor.

Shyamashish Colonizers and Developers Pvt. Ltd. is Rajasthan's fastest-growing real estate trailblazer since our establishment in February 2018. At the heart of our success are the visionary minds steering our journey. Fortunate to have the industry's best, their expertise shapes our prominence in real estate, making dreams a reality.

In Rajasthan! Welcome to Shyamashish Colonizers and Developers Pvt. Ltd., your gateway to real estate excellence. Embark on a journey of unparalleled success with the fastest-growing company in the region. A team of visionary minds is anchored. Shyan is a prominent leader in the industry, redefining excellence where passion meets precision and your dreams. Discovering the real estate company Shyamashish has etched its name is a step. Join us in a realm where there is no perfect address.

Our Commitment to You: At Shyamashish, we are committed to fostering collaborative relationships built on strong ethics and mutual trust. Our aim is to contribute to the growth of real estate professionals through invaluable training and quality service, setting the gold standard in the industry. Every step of the way, we pledge to stand by you, with your satisfaction as our top priority. Your being by your side from the beginning of the journey with Shyamashish is not just a transaction; it's a partnership built on trust, reliability, and unwavering commitment.



MR. B.L. KULARIYA
DIRECTOR OF SHYAMASHISH GROUP



MR. S.R. GORA
DIRECTOR OF SHYAMASHISH GROUP



UTTAM'S
SHYAMASHISH
PARK

Welcome to **Uttam's Shyamashish Park**, an exclusive plotting project situated along the serene Ajmer Road in Jaipur. This exceptional development combines the allure of nature with modern living, offering a tranquil and rejuvenating environment for your dream home.

☎ **+91 9828 155 255**
www.shyamashish.com

CORPORATE OFFICE ADDRESS:

41, NAGOUR NAGAR, NEAR
MANSAROVAR METRO STATION,
OPP. PILLAR NO.1, GOPALPURA
BYPASS, JAIPUR

SITE ADDRESS:

NEAR- BAD KE BALAJI,
AJMER ROAD, JAIPUR

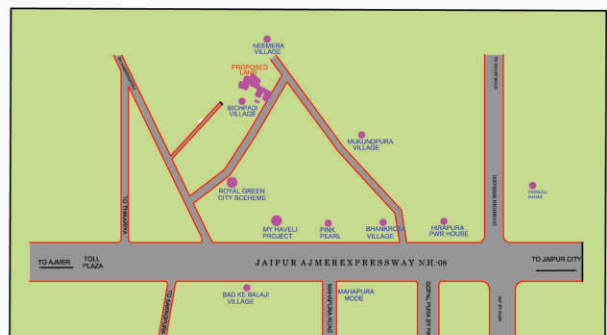
RERA Reg. No. :RAJ/P/2024/3206 www.rera.rajasthan.gov.in



Plot Size	16
No. of Club House	1
No. of Parks	8
No. of Entrance	1

LEGENDS:-

S.NO.	PLOT SIZE	COLOR CODE
1.	25' X 62'	
2.	20' X 50'	
3.	20' X 45'	
4.	25' X 55'	
5.	DIFFRENT SIZE PLOTS	
7.	LIG PLOTS	
8.	EWS PLOTS	
9.	COMM. PLOTS	
10.	PARK	
11.	FACILITY	
12.	CLUB HOUSE	



OTHER'S LAND

OTHER'S LAND

OTHER'S LAND

OTHER'S LAND

OTHER'S LAND

OTHER'S LAND

ROAD 100'-00" WIDE